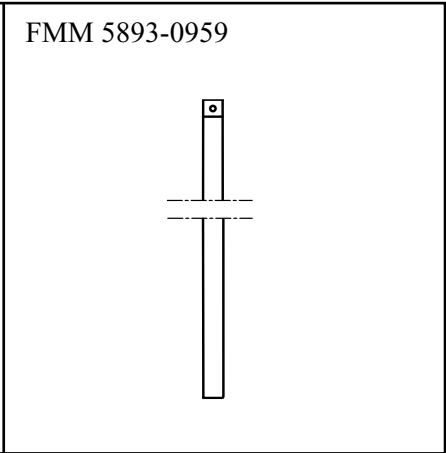
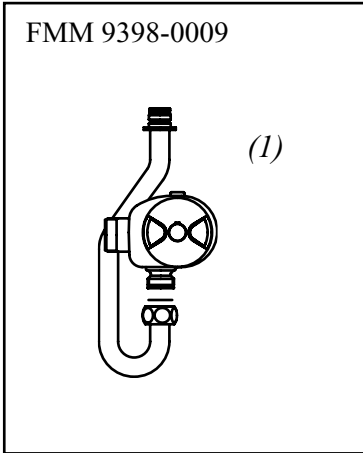
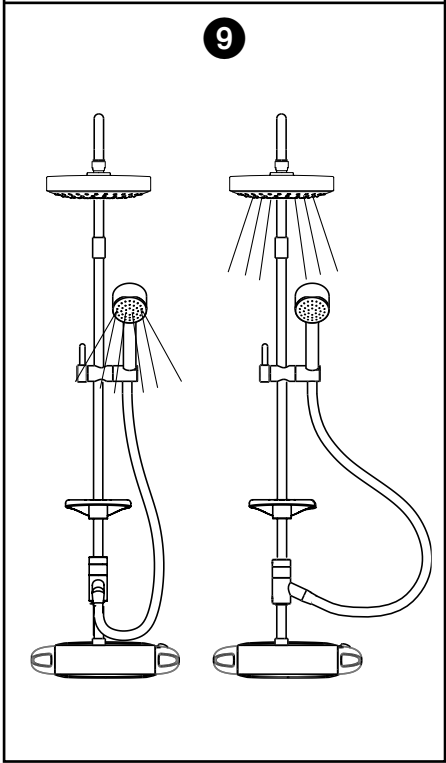
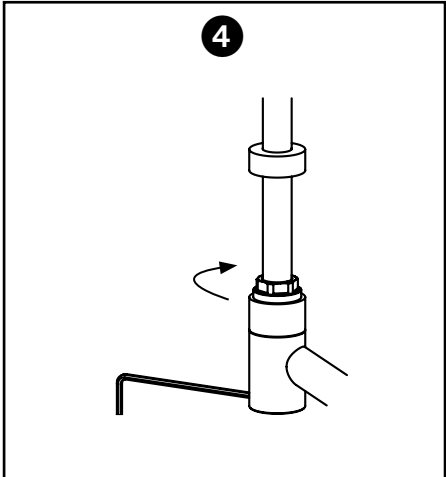


Mixer



## Installation See illustrations on page 1

❶ Start by connecting the riser tube to the mixer. Seal with the enclosed packing. Use a 10 mm allen key. If the mixer connection is downwards, the converting connection tube FMM 9398 must be attached instead. (Available as accessories).

❷ Attach the diverter to the rising tube. Push it on with the hose-outlet at right side position and tighten with a 3 mm allen key. Leave the key in the screw, as it is later used to counterhold when the tube is attached.

Then attach the wall bracket foot to the wall, positioned to the upper part of the wall tube. Consider any required length adjustment of the tube or if the longer tube shall be used. (FMM 5893). If attached to a tiled wall, seal the hole carefully with silicone.

❸ If the straight wall tube needs to be adjusted in length, cut at the lower end where no interlock device is attached.

An extended tube, FMM 5893 (+220 mm) is available as accessories, if the shower head is desired higher installed.

The tube is mounted into the adapter nipple, but first the following components are pushed on to the tube in named order: The handshower holder, the soap-cup bush with the thinner end upwards, the adapter cover-ring and the parts not tightened to the diverter; the compression nipple, the O-ring, the slide ring and the open locking ring. Push the tube down into the adapter.

❹ Tighten the tube with the compression nipple. (24 mm spanner). Counter hold with the allen key, left in the diverter. Thread on the cover ring and tighten the locking screw with a 2,5 mm allen key. Push on the soap-cup to the bush.

❺ Thread on the wall bracket to the tube. Attach the pin extender if needed, and fit the pin into the foot. Tighten with a 2,5 mm allen key.

❻ Assemble the upper tube to the wall tube, and lock it with a 2,5 mm allen key.

❼ Attach the shower head. Seal with the enclosed packing. Tighten with a 20 mm spanner.

❽ Assemble the hand shower and hose, with the swivel nut against the hand shower. Seal with enclosed packings.

### Use

❾ Changeover between shower head and hand shower:

The diverter hose connection forward—Hand shower.  
The diverter hose connection sideways—Shower head.

The shower head is flexible and equipped, like the hand shower, with a 12 l/min EcoFlow-cartridge. After use some dripping may occur from the shower screen.

---

# FM Mattsson

Box 427, SE-792 27 MORA, Sweden.

Tel +46 (0)250-278 00. Fax +46 (0)250-159 60.

[www.fmmattsson.com](http://www.fmmattsson.com)