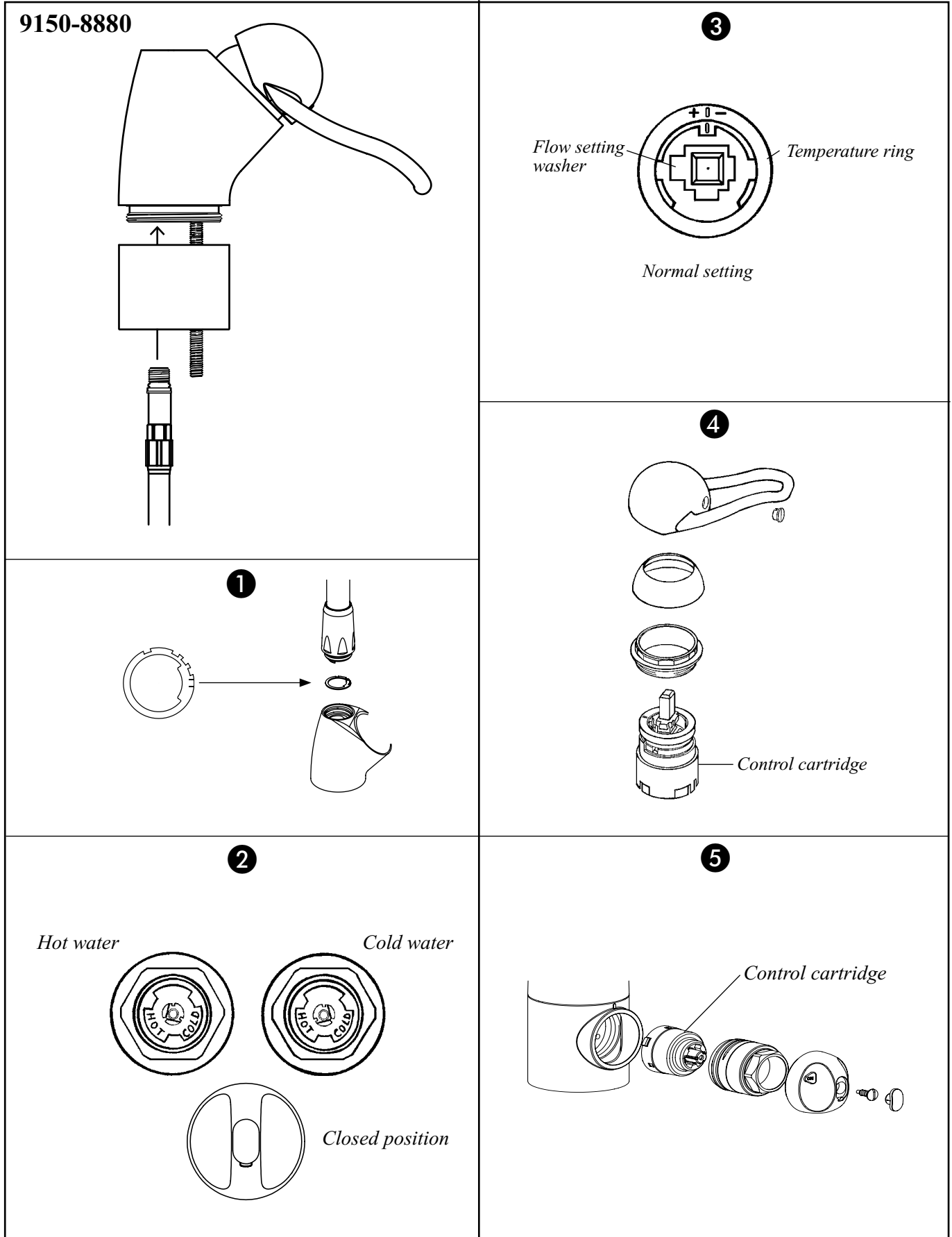


1001077

06.12



Always close the main supply valve during service/maintenance work.

(Not applicable during temperature and flow limiter adjustment).

Function

The water flow is controlled by way of moving the lever vertically. The higher the lever is set, the more water flow is obtained. When the lever is depressed, the water flow is shut off.

The temperature is controlled by way of moving the lever sideways. When positioned at the extreme right, only cold water is obtained, and at the opposite extreme left, only hot water is provided.

Dishwasher shut off valve

Closed position: Knob position vertically. (See illustration 1.)
Open position: Knob position 60° from above.

Installation

Attachment

First attach the inlet tubes to the mixer body. For the mixer 9150, the lower part must be removed to access the threads for the tubes, see illustration. The mixer has an O-ring on the under side to seal against the sink/work top. Make sure it is positioned in its notch when installing. Place the base plate adjacent to the sink plate with the flat side up against the sink plate. Tighten the mixer with the nut and the "horse shoe" shaped washer against the base plate flange. The nut can be used from both ends depending on bench thickness.

Supporting bushes

When connecting to the main water, supporting bushes must be used in the tube ends.

Connecting the mixer

When tightening the connection coupling, hold the inlet tube to prevent it from unthreading from mixer.

Mixer with dishwasher isolator

The rear tube in the middle is the outlet tube to dishwasher/washmachine. If not connected to a machine, the enclosed coupling and cap **must** be mounted.

① Attaching the spout

The swivel limitation washer to 110° must be installed. It is positioned with the limiting lug forwards and with the bent lug downwards. When the spout has been mounted, remove the tape from the retaining nut.

② Cold water or hot water to dishwasher

The mixer is preset to provide cold water. To obtain hot water, pull off the knob (see § 5) and turn the spindle clockwise to stop. Remount the knob, at closed position. When resetting from HW to CW, the spindle is turned counter-clockwise to stop and the knob is remounted at open position.

③ Flow and temperature restrictors

Lift off the lever and unscrew the cover bush. (see 4). Four different flows can be set with the square washer. Pull it off, and turn desired lug backwards against the stop notch. The larger lug, the less flow is accessible. The different flows are 100% and appr. 85%, 60% and 50%. The temperature limitation is obtained by regearing the cogs of the temperature ring. The more it is turned clockwise, (towards "–") the less hot water is accessible.

④ Replacing the regulating cartridge

To dismount the lever, take off the red/blue plug and loosen the socket head screw (2,5 mm allen key) appr. one turn. Unscrew the cover bush, use a screwdriver or a mandrel and tap gently in the groves on the top face of the bush. Screw up the large retaining nut, using the spanner FMM 6086. If the cartridge is stuck, bend with two screwdrivers. Clean the body. After replacing the cartridge, rinse and clean the aerator.

⑤ Replacing the dishwasher stop valve cartridge

See illustration (see also 2). Note that the cartridge must fit to two small holes in the mixer body.

Lubrication

Use **only silicone grease** for lubrication

Freezing damage risk

Dismount the control cartridge and store in heated areas.

Cleaning

The mixers are best preserved by regular cleaning with a soft cloth and a soap solution, followed by rinsing with clean water and polishing with a soft dry cloth. For removal of lime spots use vinegar before rinsing with water.

Cleaning the aerator

Unscrew the aerator and clean the insert from impurities frequently. If the insert has lime deposits, wash with vinegar solution.

Technical data

Max hot water temperature 80°C.
Water supply pressure 50-1000 kPa.
Max test pressure 1600 kPa.

FM Mattsson

Box 427, SE-792 27 MORA, Sweden.
Tel +46 (0)250-278 00. Fax +46 (0)250-159 60.
www.fmmattsson.com