



Uniclass L725111	EPIC G611
CI/SB (74.26)	X

**DATA**

Thermostatic & Pressure Balanced Mixing Valve  
 Exposed Supply c/w Riser Kit  
 Maximum Temperature 90°  
 Minimum Pressure 0.2 Bar  
 Maximum Pressure 12 Bar  
 Pressure Differential 10 Bar  
 Normal Control Temperature 38°  
 Output Temp Differential +/- 1°c  
 Max Output 8 l/pm @ 6 Bar

**MATERIALS**

Mixer Body BZR Brass With Chrome Finish  
 Handles ABS Plastic  
 Riser Kit Steel & ABS Plastic  
 Connections G1/2

**FEATURES**

Thermostatic & Pressure Balanced Cartridges constant temp regardless of pressure variations  
 Anti Scald cut off 0.02 seconds  
 Quick & Easy to fit & maintain  
 NRV Fitted to Hot & Cold Inlets  
 We recommend the use of isolating ball valves with our units

**SPEC CODES**

Mixer & Riser Kit 9215-0000  
 Fixing Bracket 2099-1200  
 Riser Kit 9310-0050

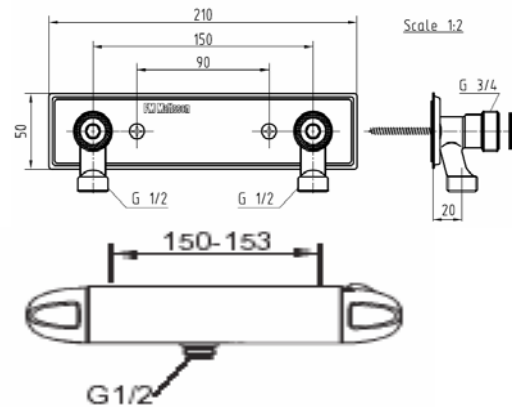
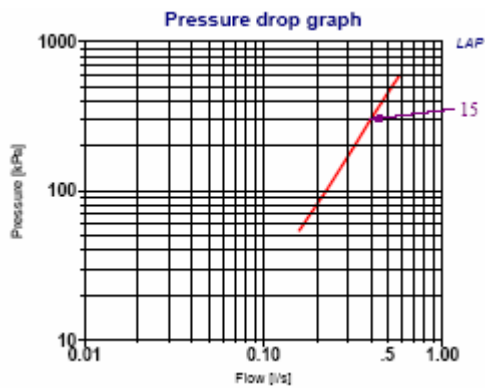
**APPROVALS**

WRAS DO8 TMV3 ISO9001 ISO 14002

**APPLICATION**

Multi user and multi floor applications. Hospital, hotels, accommodation blocks, halls of residence, barracks, gymnasiums.

**FMM 06 Kit**



**5 YEAR  
CALCIUM  
GUARANTEE**  
FM Mattsson

**5 YEAR  
TEMPERATURE  
GUARANTEE**  
FM Mattsson

**5 YEAR  
PRESSURE  
GUARANTEE**  
FM Mattsson

0870 7657987

[www.alchallis.com](http://www.alchallis.com)

[info@alchallis.com](mailto:info@alchallis.com)

